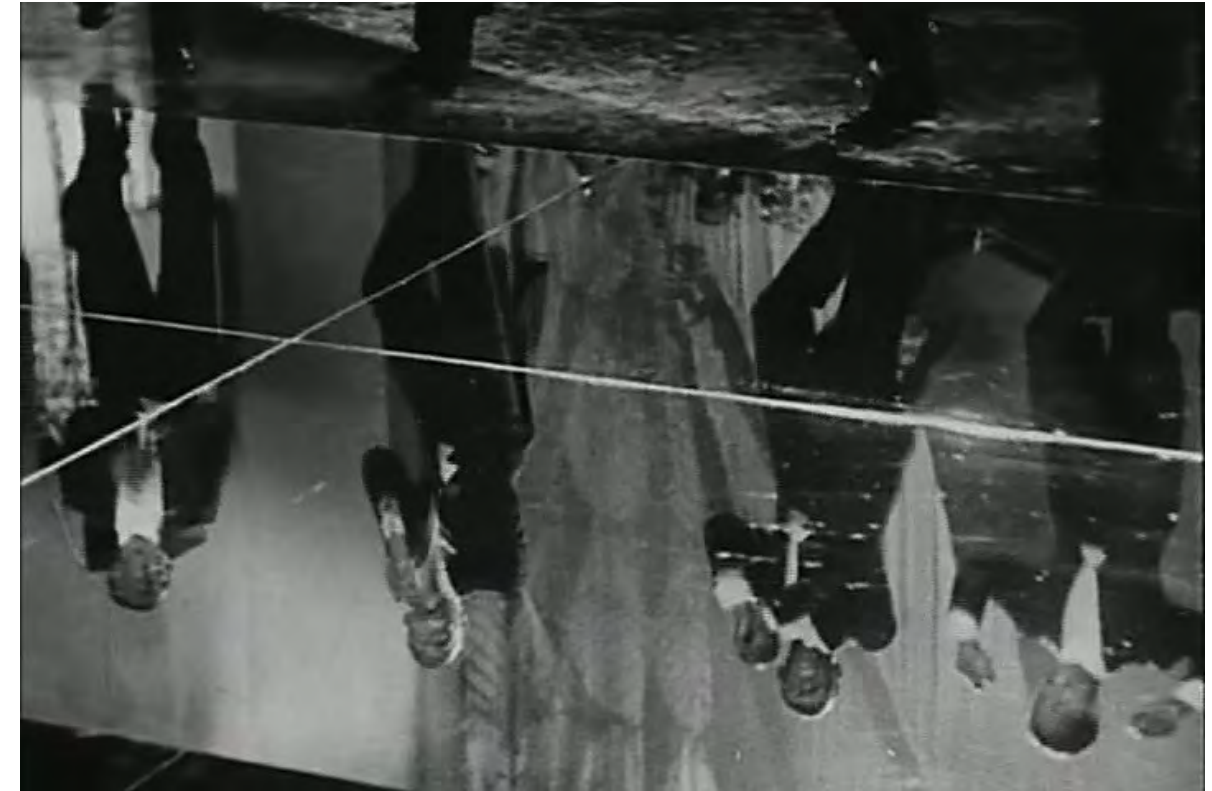


The WOODSON

PRELIMINARY SCHEMATIC RE-DESIGN PRESENTATION
CITY OF ST. PETERSBURG, FLORIDA



ROMARE BEARDEN, "Jazz Village," mixed media and collage on board, 1967 (30 x 40 in.) @Romare Bearden Foundation



Black and Tan, 1929 (Film). Dir. Dudley Murphy

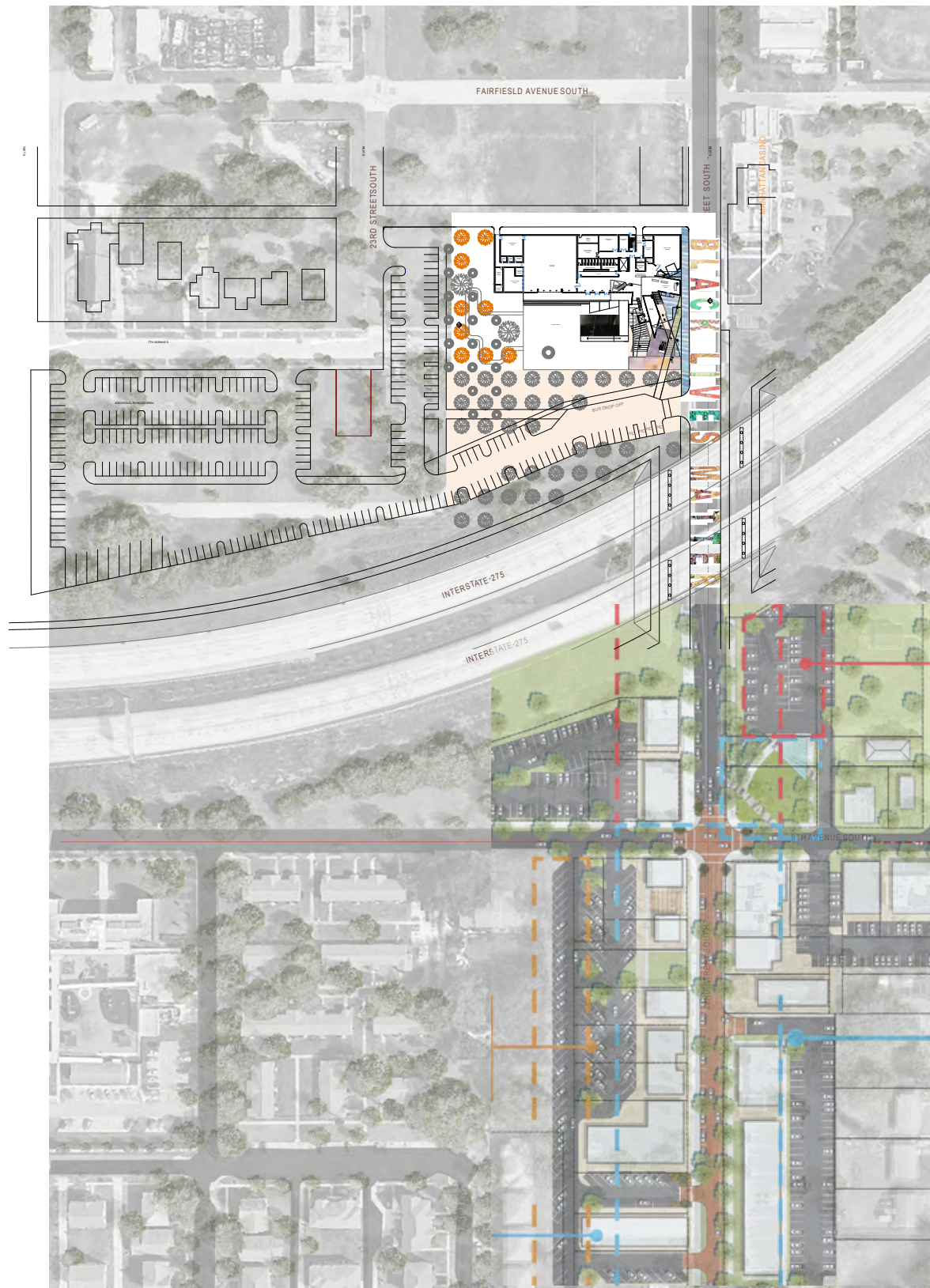
Ralph Ellison defines the jazz impulse as a constant process of redefinition. The jazz artist constantly reworks her identity on three levels: (1) as an individual, (2) as a member of a community; and (3) as a "link in the chain of tradition". Nothing is ever a given. Who you are, the people you live with and for, the culture you bear: everything remains open to question, probing, reevaluation....



LOUIS ARMSTRONG appears at the Manhattan Casino in March 1957. Tampa Bay Times file photos.



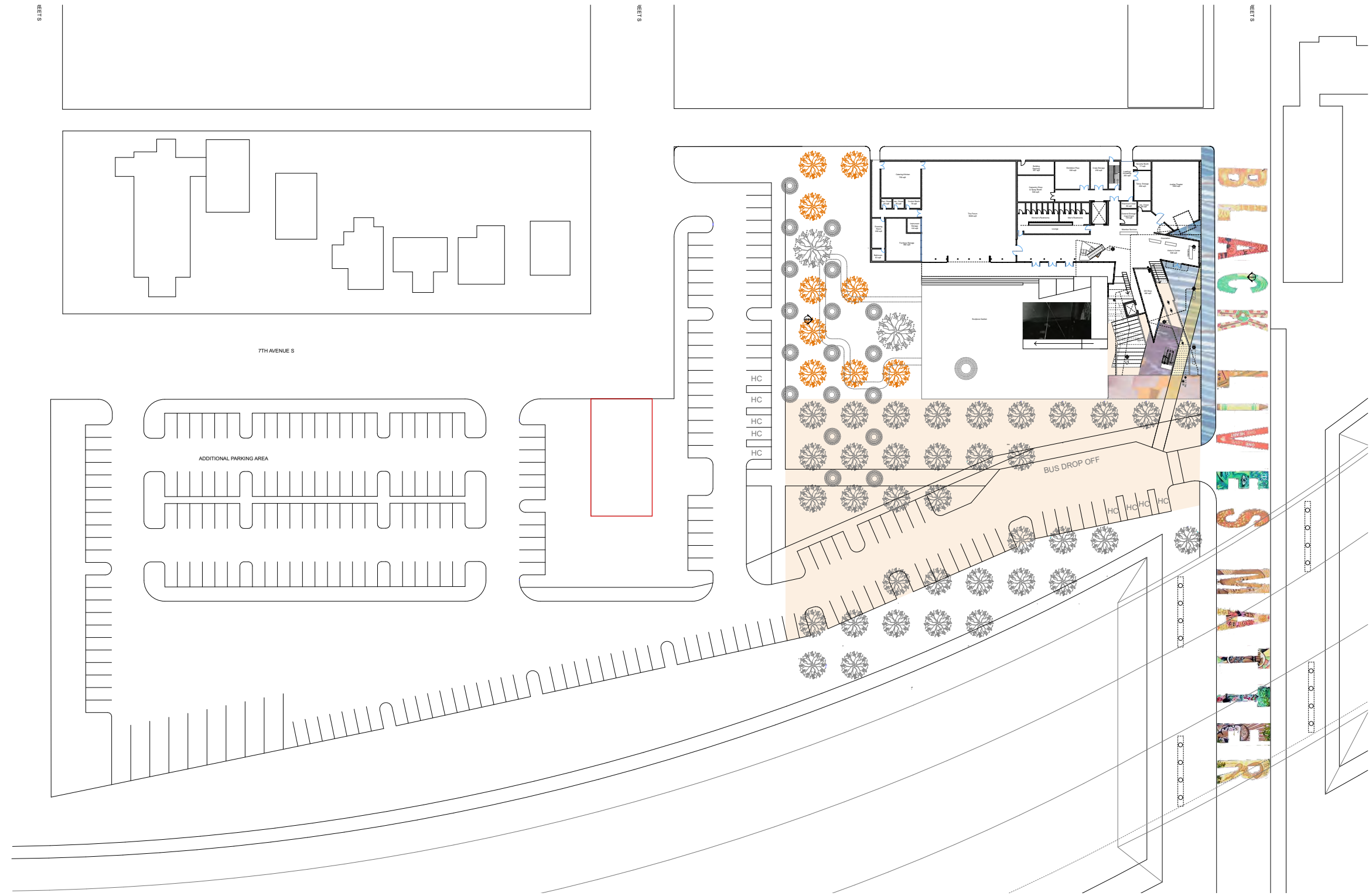




0 50



DR. CARTER G. WOODSON
AFRICAN AMERICAN MUSEUM



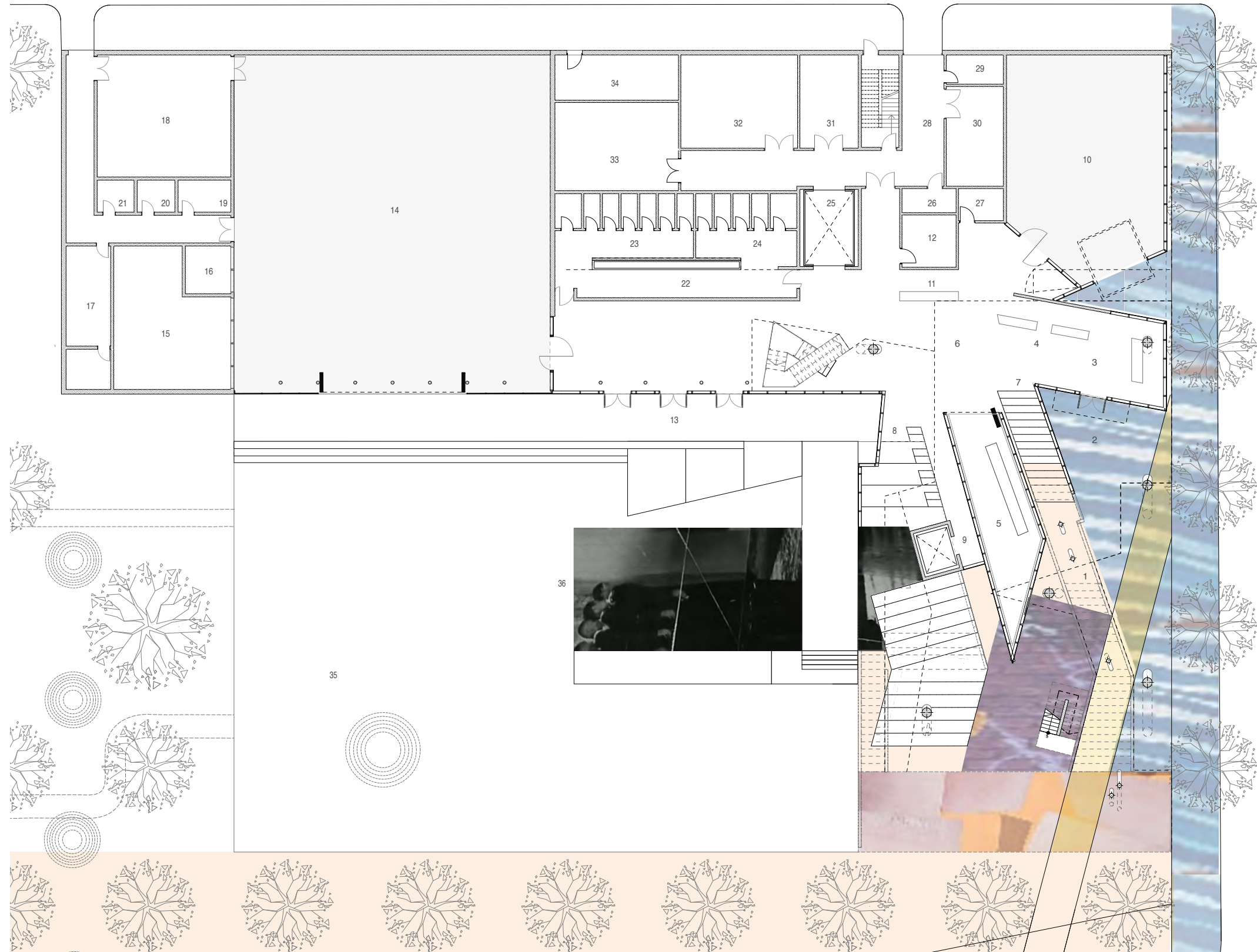
SITE PLAN



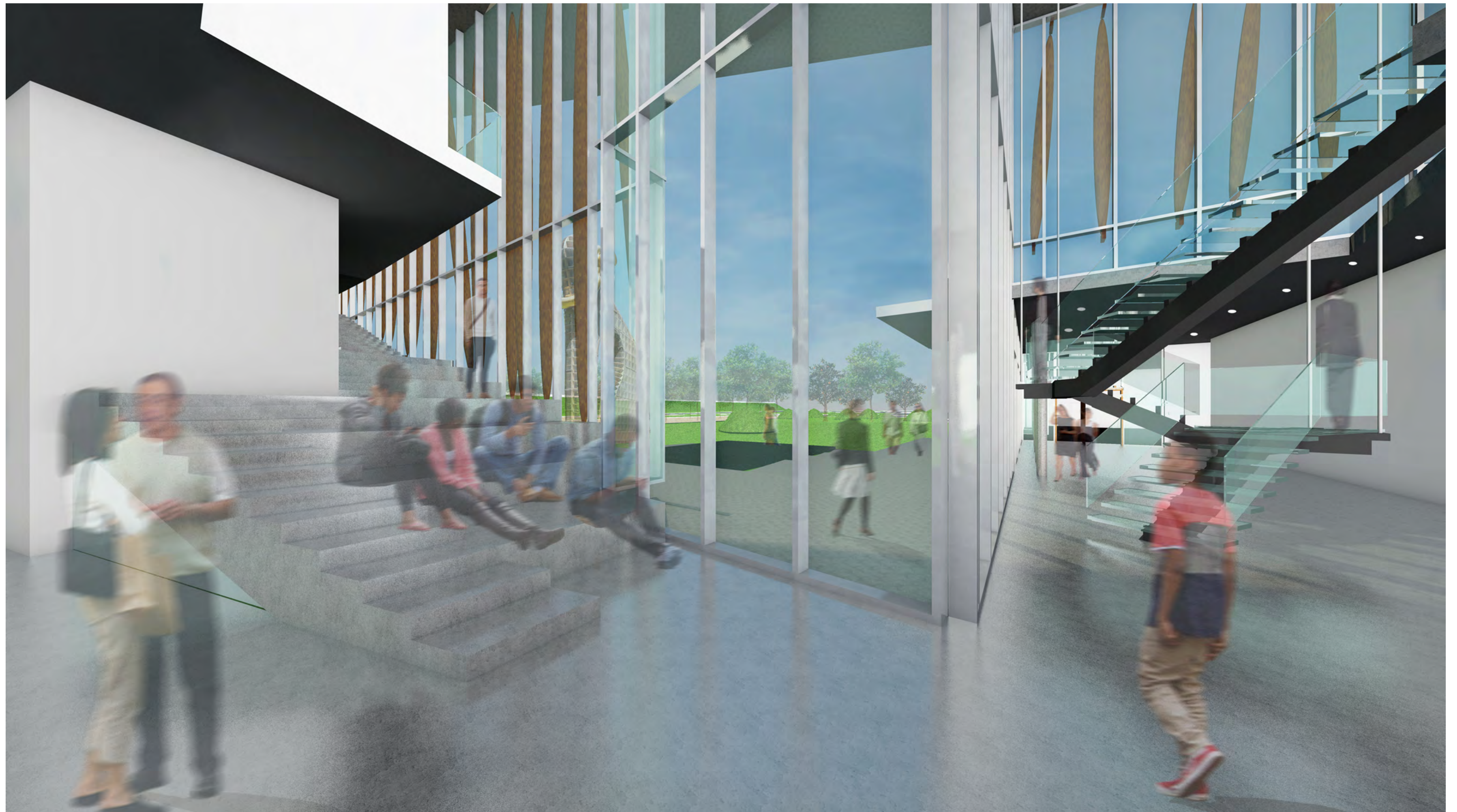


First Floor Legend

- 1 Plaza
- 2 Entrance
- 3 Visitors Center
- 4 Orientation
- 5 Gift Shop
- 6 Lobby
- 7 East Stramp
- 8 West Stramp
- 9 Elevator
- 10 The Justice Center
- 11 Members' Desk
- 12 Coat Check
- 13 Terrace
- 14 The Forum
- 15 Furniture Storage
- 16 Instrument Storage
- 17 Dressing Room
- 18 Catering Kitchen
- 19 Control Room
- 20 Janitor
- 21 Electrical
- 22 Lounge
- 23 Women
- 24 Men
- 25 Freight
- 26 Electrical
- 27 Janitor
- 28 Loading / Crating
- 29 Security
- 30 Temporary Storage
- 31 Crate Storage
- 32 Exhibition Preparation
- 33 Carpentry Shop
- 34 Building Services



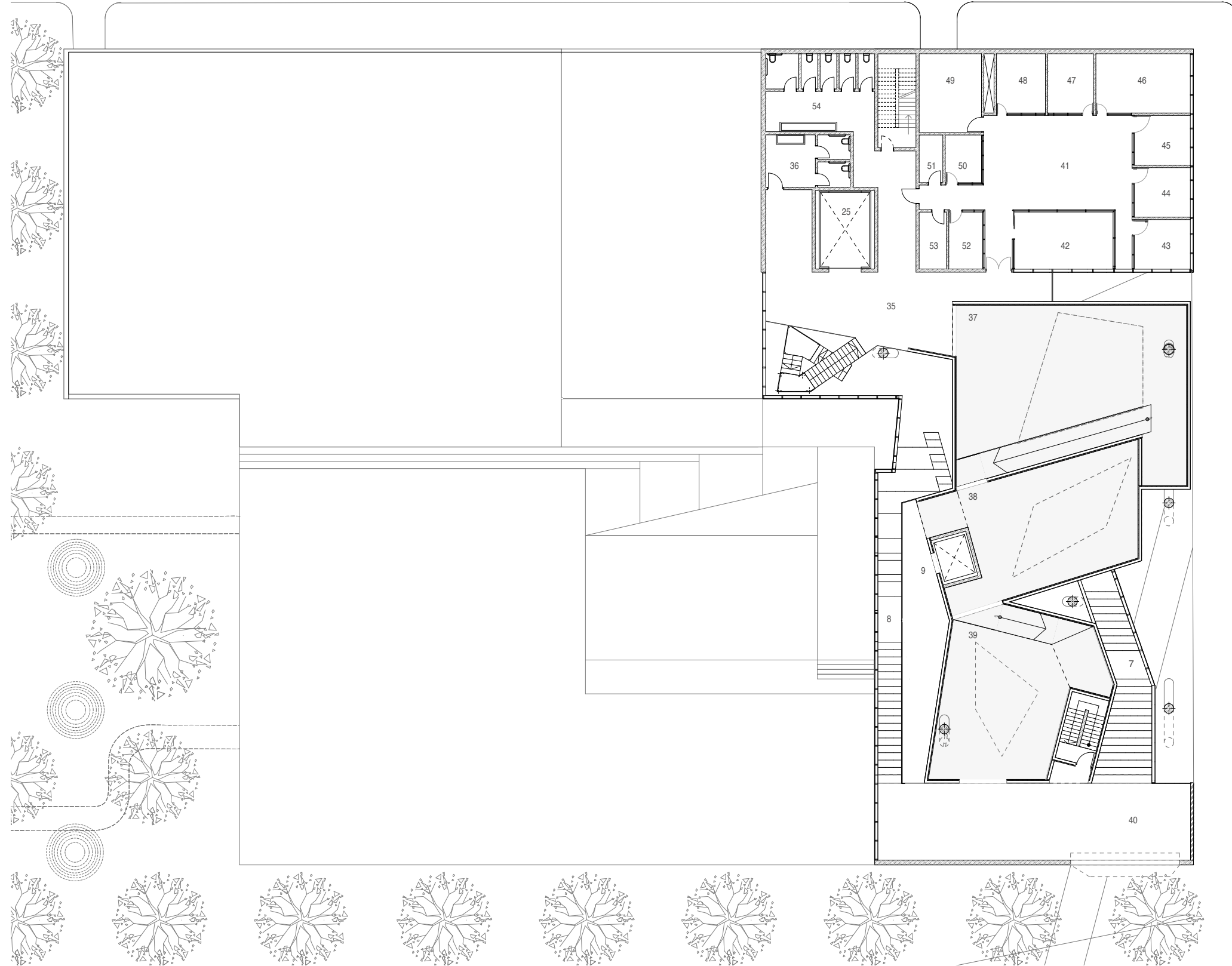
FIRST FLOOR PLAN





Second Floor Legend

- 35 Upper Lobby
- 36 All Gender Restroom
- 37 Gallery One
- 38 Gallery Two
- 39 Gallery Three
- 40 Loggia
- 41 Open Office Administration
- 42 Meeting Room
- 43 Executive Office
- 44 Executive Office
- 45 Executive Office
- 48 Board Room
- 47 Curatorial Department
- 48 Facilities Department
- 49 General Storage
- 50 IT Office
- 51 Janitor
- 52 Security Office
- 53 Electrical
- 54 All Gender Administration



SECOND FLOOR PLAN





